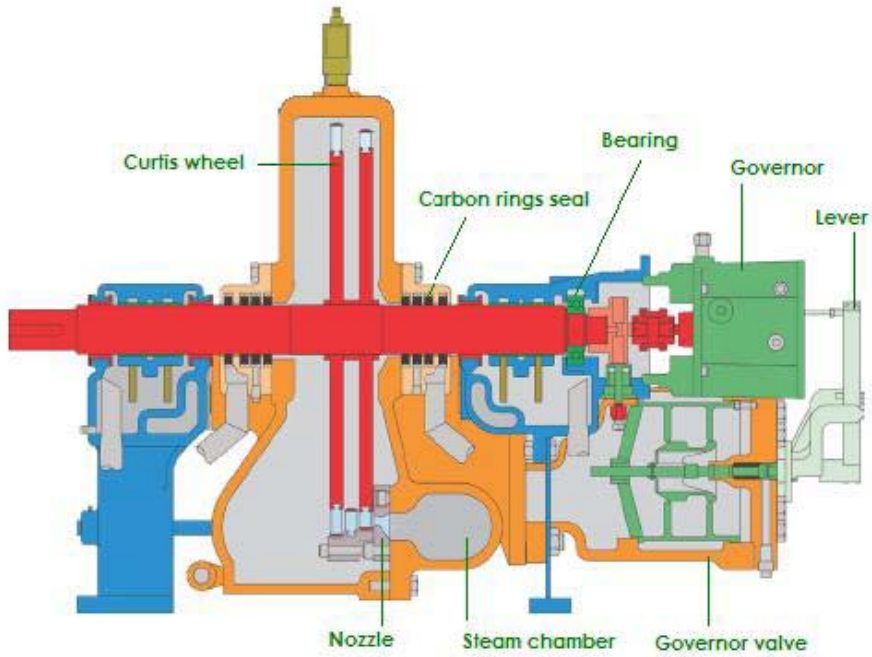
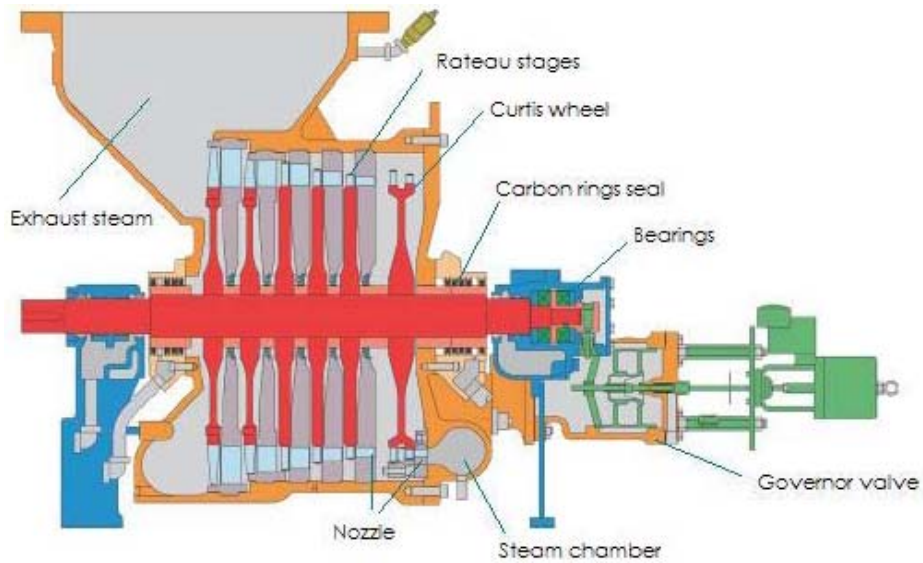


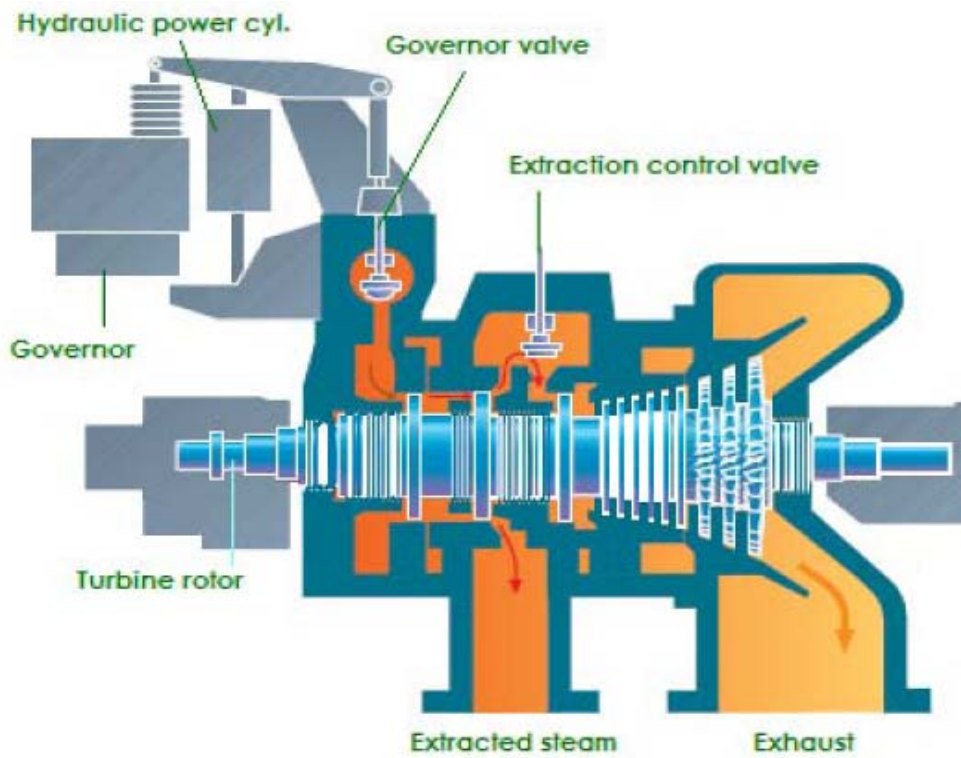
CROSS SECTIONAL DRAWING OF STEAM TURBINE



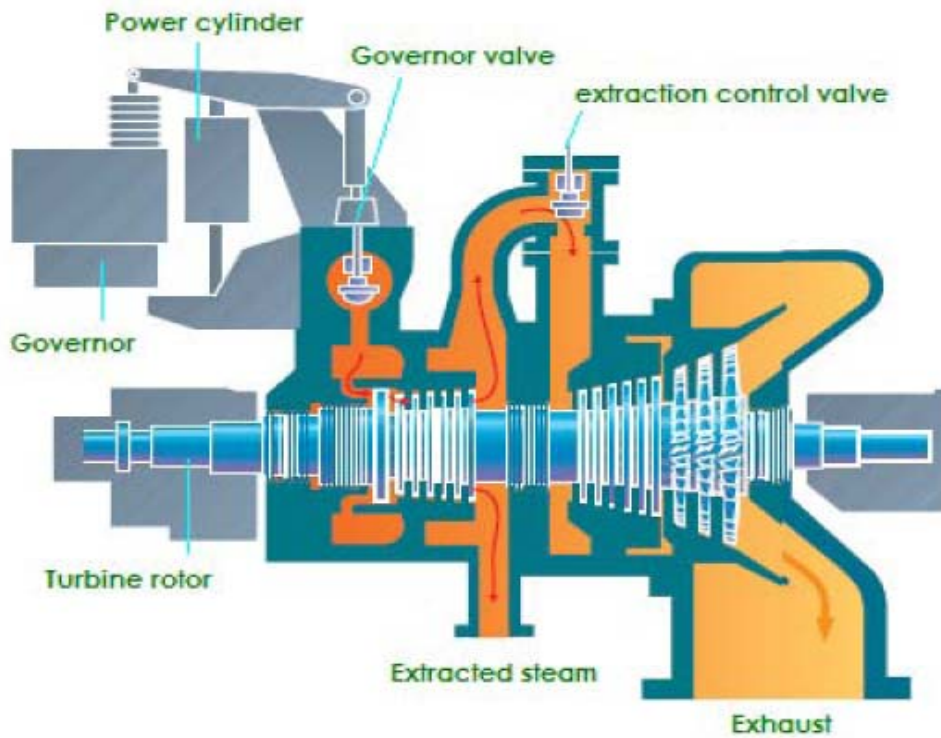
CURTIS STAND ALONE



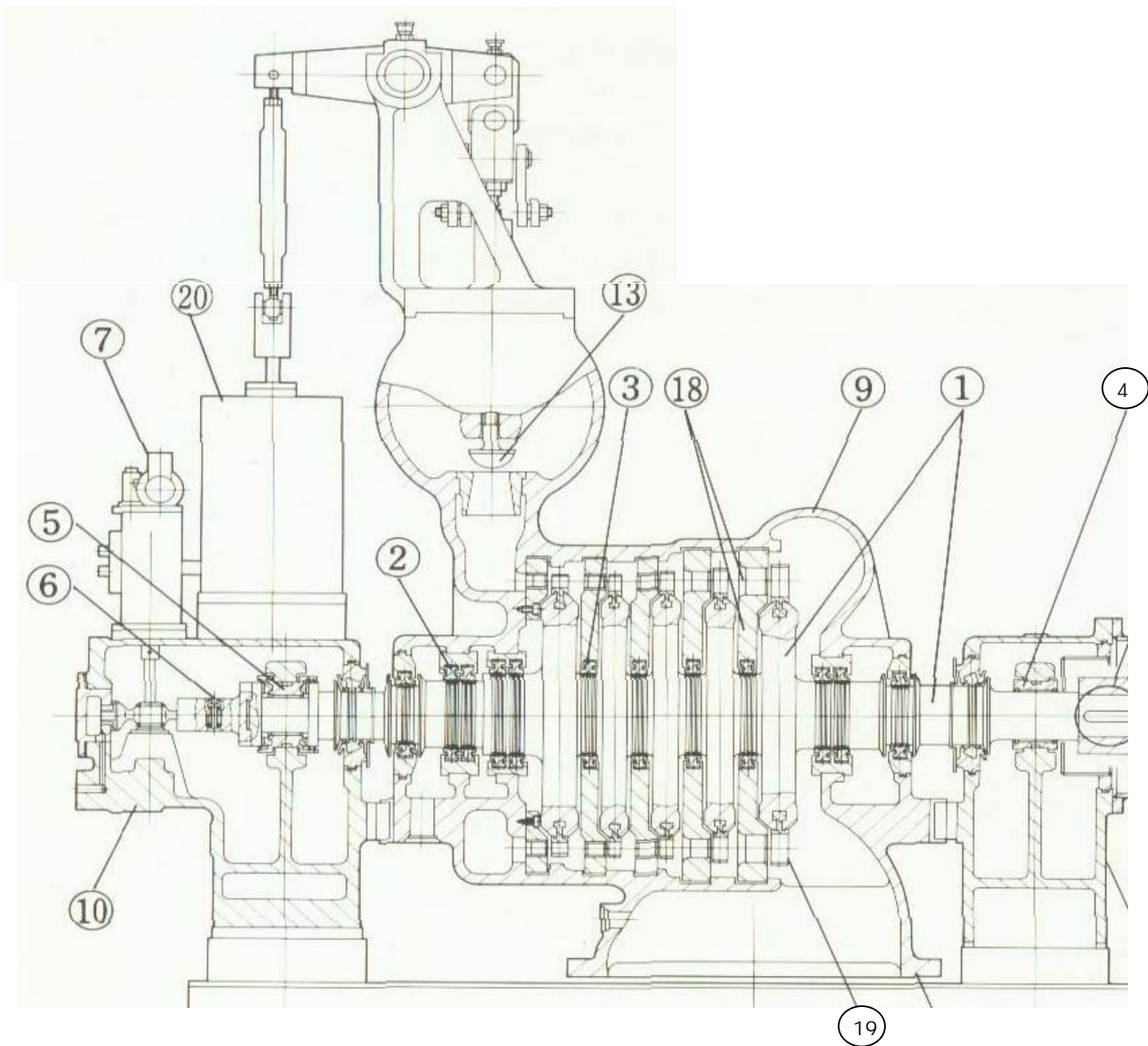
CURTIS AND RATEAU STAGES



IMPULSE + IMPULSE + REACTION STAGES WITH EXTRACTION



IMPULSE + IMPULSE + REACTION STAGES WITH EXTRACTION



- | | |
|---|-----------------------|
| (1) Rotor | (9) Turbine casing |
| (2) External gland seal (Labyrinth packing) | (10) Bearing pedestal |
| (3) Internal gland seal (Labyrinth packing) | (13) Governor valve |
| (4) Radial bearing | (18) Nozzle/Diaphragm |
| (5) Thrust bearing | (19) Moving blade |
| (6) Overspeed trip device | (20) Power piston |
| (7) Governor | |

RATEAU STAGES